



Board Meeting

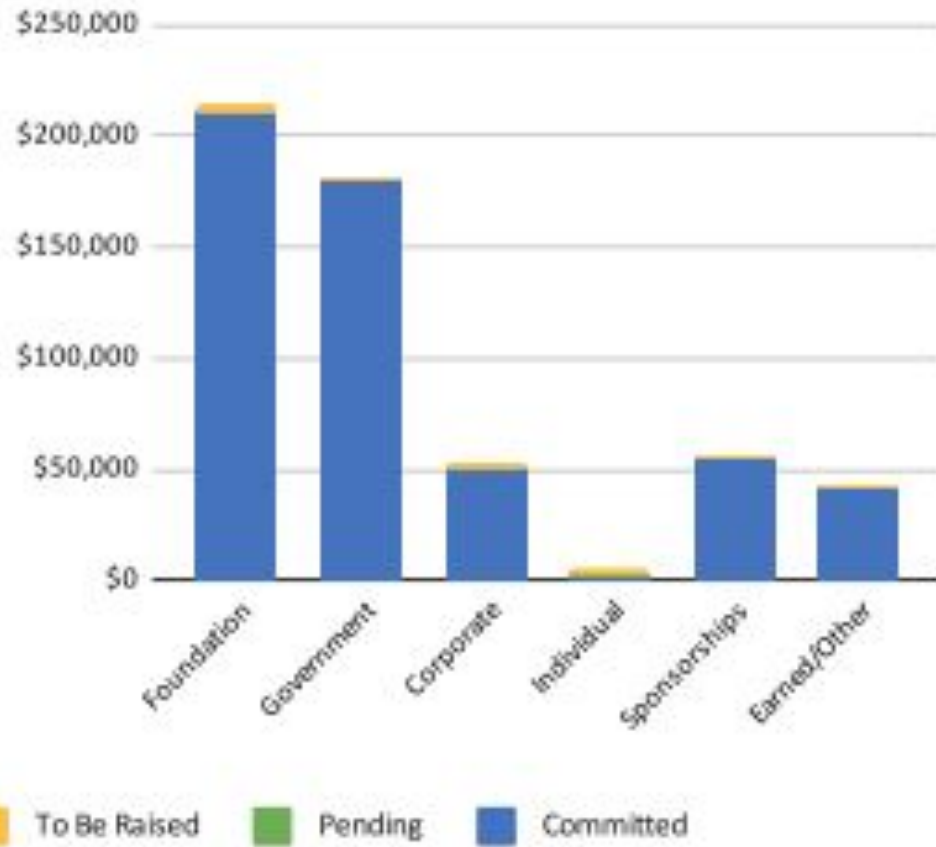
May 3, 2022

Introductions

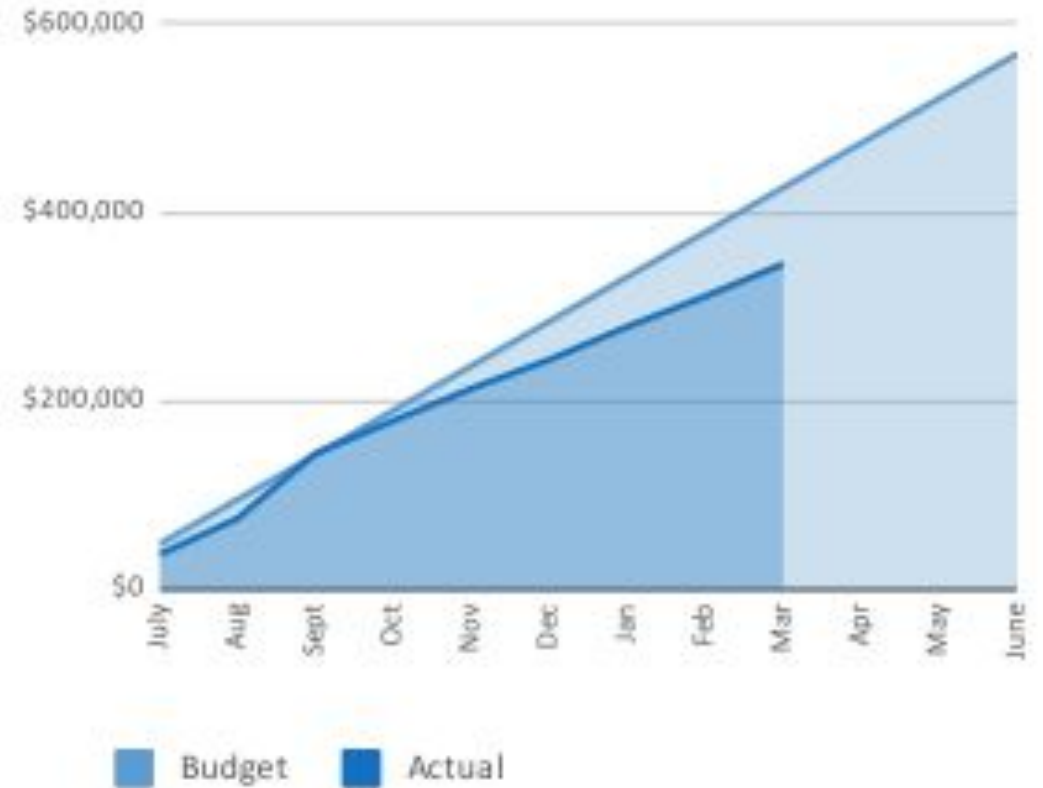
Approval of Minutes

Treasurer's Report

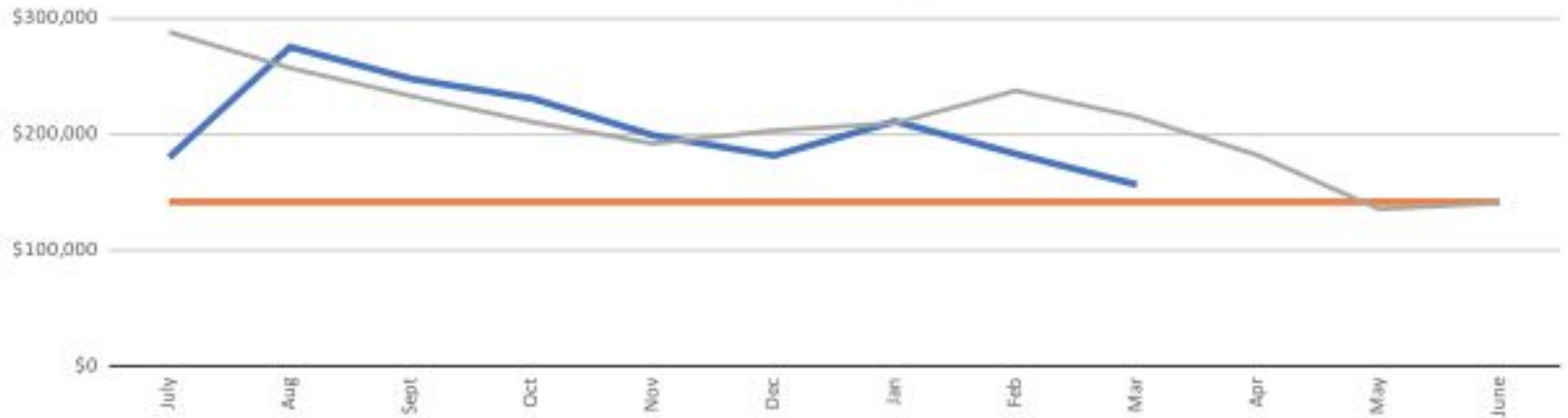
Operating Revenue



Operating Expenses Cumulative for July 1 - June 30



Operating Reserve Unrestricted Net Assets To Fund Operations



■ Unrestricted Operating Assets Current Year ■ Target: At Least 3 Months of Operating Expenses ■ Unrestricted Operating Assets Prior Year

Highlights

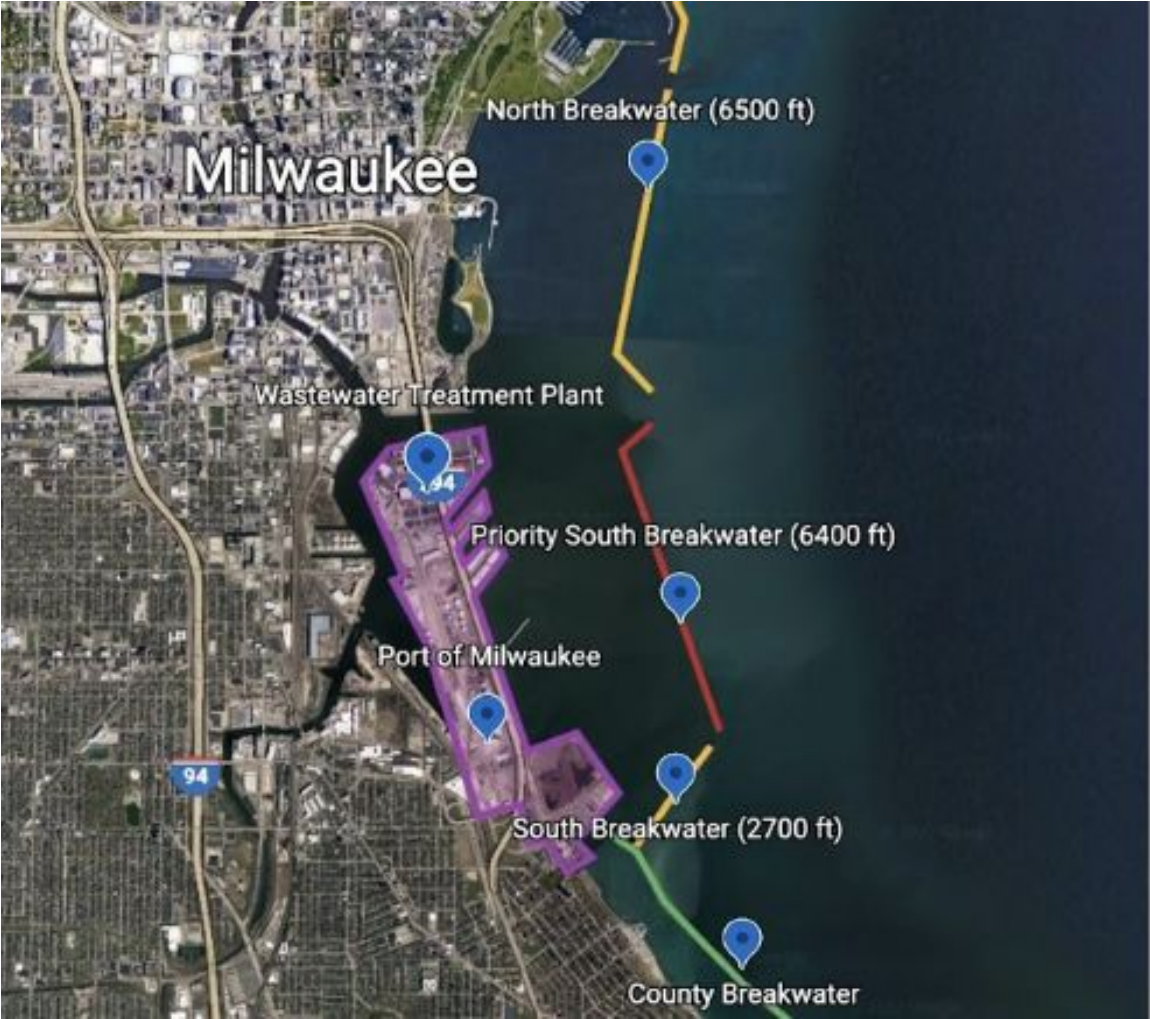
- Total revenue committed exceeds budget goal
- Operating expenses are at 60% of budget at 75% of the year
- As of April 27th, 47% of board members have made a contribution, for a total of \$6,000; two board members have made corporate pledges for 22-23 events
- Temporarily Restricted Net Assets includes \$135,000 of time-restricted operating support for the 22-23 fiscal year; those net assets become unrestricted as of July 1

Balance Sheet Summary

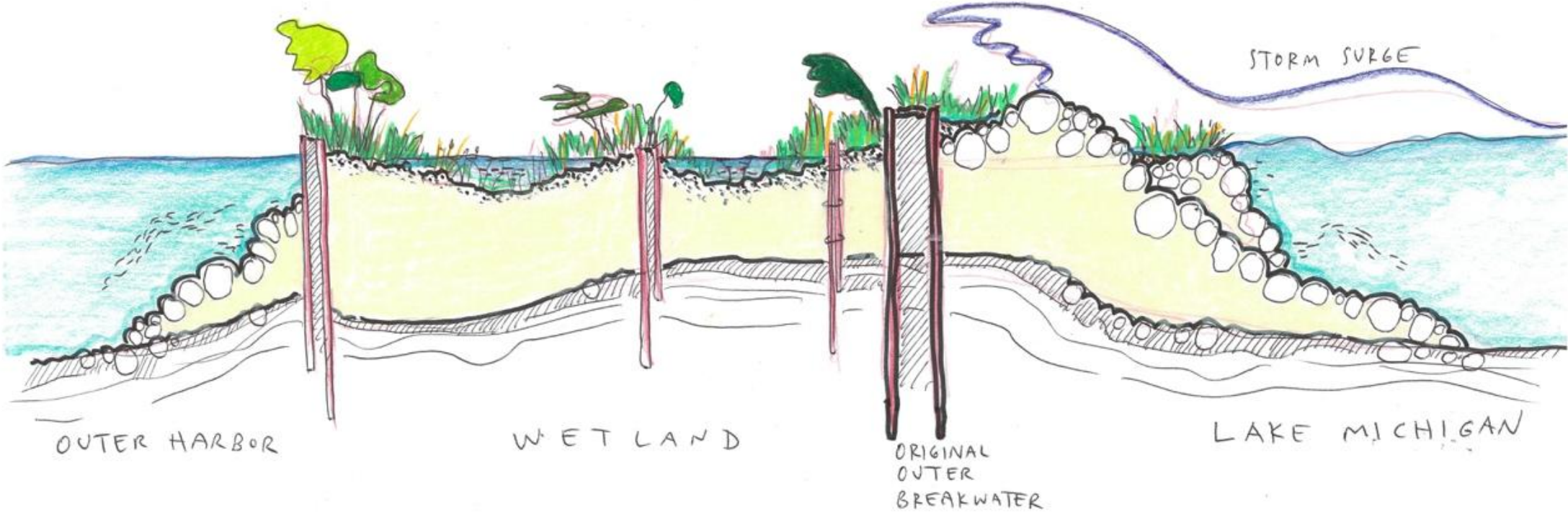
	1-mo Chg	Balance 3/31
Non-Fixed Assets	-8%	\$ 465,743
Fixed Assets	0%	\$ 1,356,178
Liabilities	0%	\$ 5,404
Net Assets	-2%	\$ 1,816,516

Staff Report and Actions

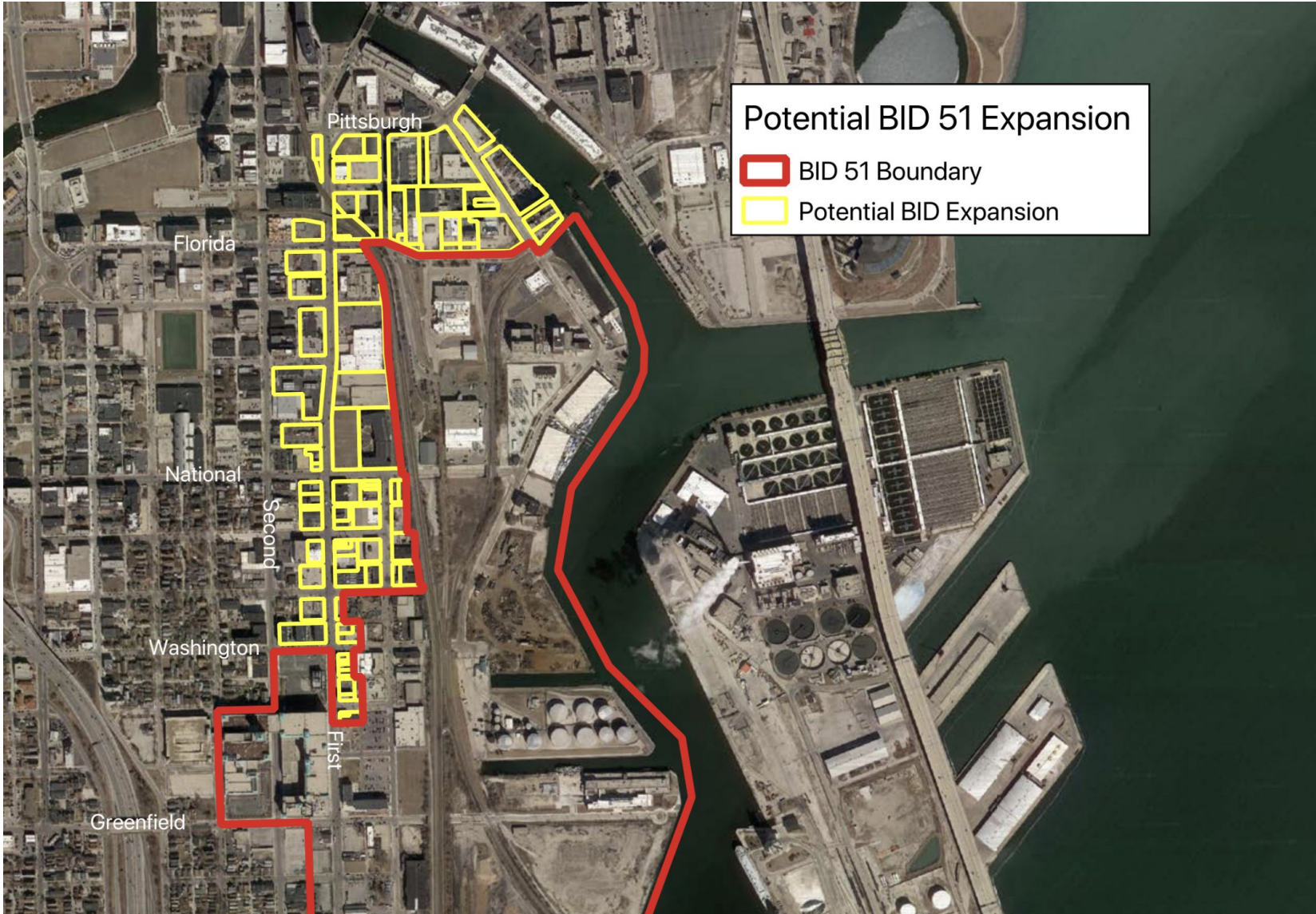
Ecological Breakwater



Ecological Breakwater



BID Expansion



Trash Collector Update

Why we're here

Prolific Litter

- 6 years ago identified approach & location
- Worked with Adjacent Property Owners to determine goals



Project Goals

Remove Trash

- wildlife health benefits
- water quality benefits
- public health benefits
- aesthetic benefits

Public Education & Visibility

- reduce littering behavior
- awareness of water quality issues



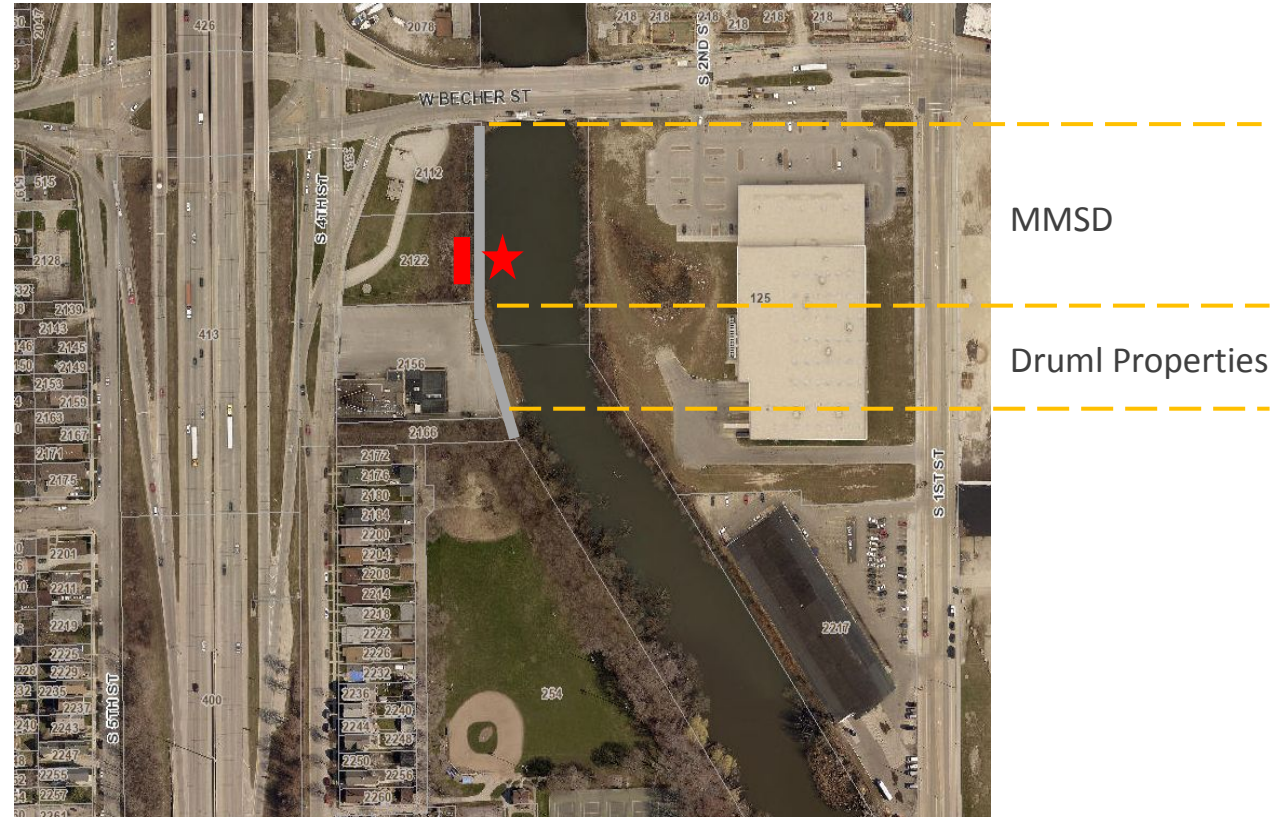
How we got here

Researched Models



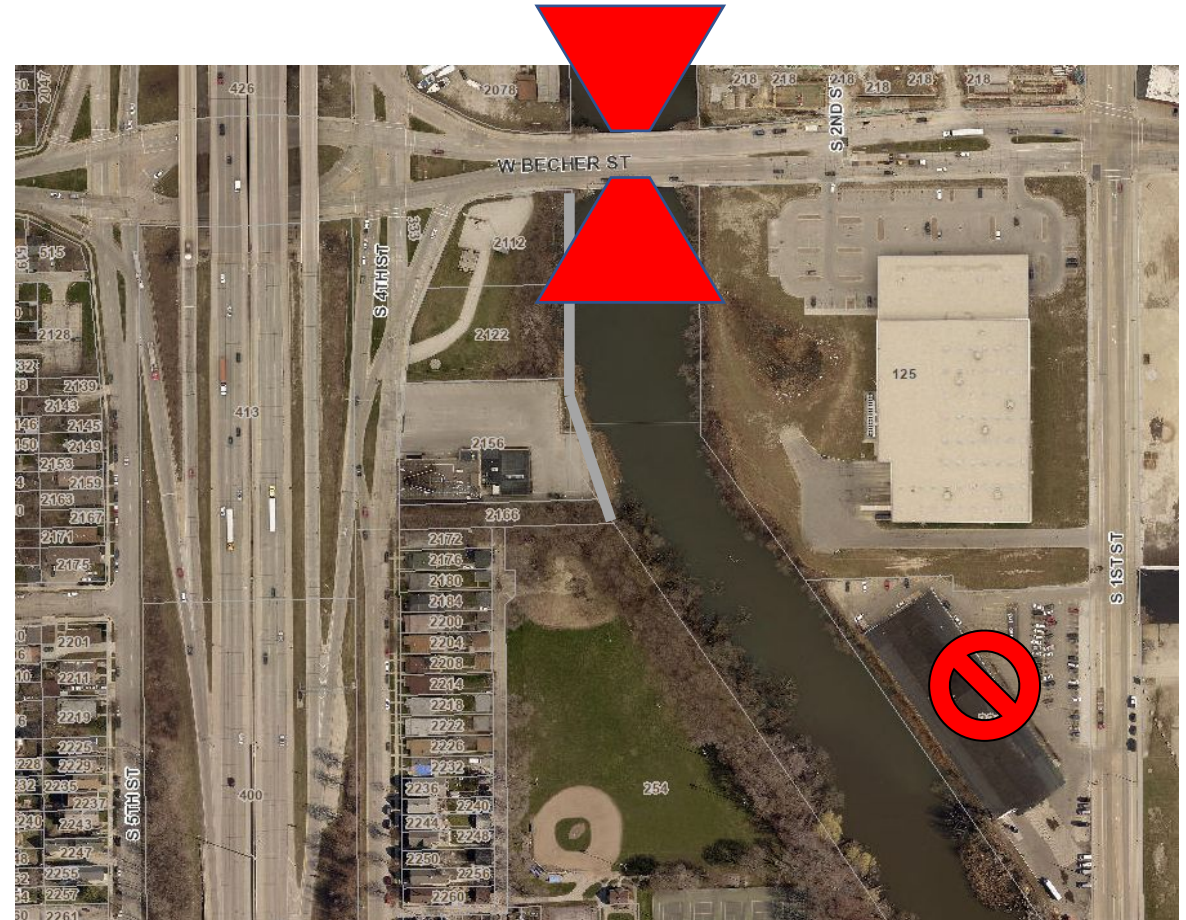
Progress to Date

- Reached agreement with adjacent property owners on installation
- Secured \$750,000+ funding
- Researched Permit implications
- Signed Contract for Manufacture of Trash Collector



Permit Research

- Hydrology work done to assess impacts
- Pilings for Trash Collector increases floodplain on neighboring property
- Becher St. bridge acts as a pinch point affecting any option south of it



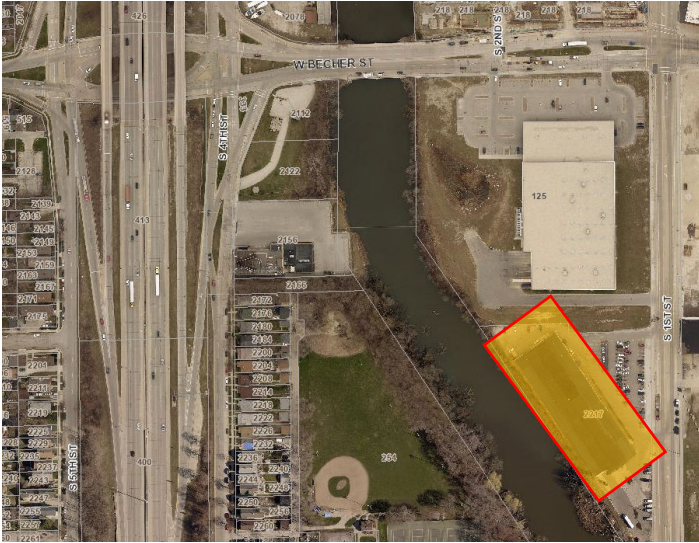
Options for Today

We either:

- Solve for permit issue
or
- Avoid Permit Issue
or
- Not in the Harbor District

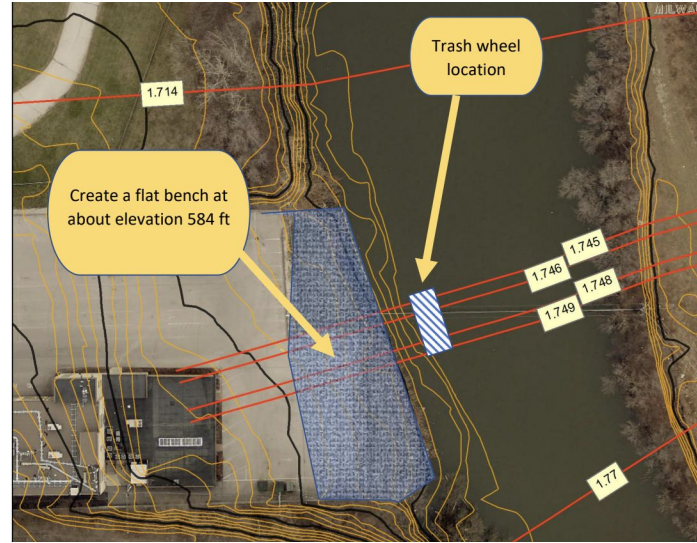
Solve for Permit Issue

Buy Building



- Uncertain path forward
- Cost is undetermined (AV \$600,000)
- Solves larger floodplain issue
- Creates Opportunity for river access and community space

Flood Storage @ Druml



- Loss of parking lot
- Cost \$750K
- Loss of natural bank
- Loss of habitat opportunity
- Stabilizes shoreline for riverwalk

Flood Storage @ Druml & MMSD



- Loss of parking lot
- Cost \$1.1M
- Loss of natural bank
- Loss of habitat opportunity
- Stabilizes shoreline for riverwalk and dumpster access
- MMSD loss land

Avoid Permit Issue

Passive Approach



- Requires water based removal/towing/unloading
- Changes in current direction make passive collection ineffective
- Poor aesthetics
- Complicated to service
- Low cost
- Simple to install

Land Based Dumpster/New Site



- Must be N of Becher Bridge
- Requires property owner partnership
- Currently contracted
- Easiest unloading option
- Positive visibility for collector
- Dumpster could be concealed

Water Based Dumpster



- Must be N of Becher Bridge
- Requires water based removal/towing/unloading
- Possible partnership w/ MMSD on unloading
- Positive visibility for collector

Not in the Harbor District

Explore Menomonee (MVP)



- Potentially similar floodplain permit issues
- Harbor District Community Loss
- Address significant trash issue in MV
- Organization with capacity to execute
- Suitable MMSD parcel in MV

Explore Milwaukee (RFF)



- Harbor District Community Loss
- Partner does not currently have capacity to manage project
- Addresses trash in Milwaukee River

Give back money



- This funding not available in the future
- Reputational impact unclear
- Reallocation of valuable HDI time

Which Path



Avoid
Permit

Solve
Permit

	Buy Building	Flood Storage @ Druml	Flood Storage @ Druml & MMSD	Passive Approach	Land Based Dumpster /New Site	Water Based Dumpster	Explore Menomonee (MVP)	Explore Milwaukee (RRF)	Give back \$
Cost	●	●	●	●	●	●	●	●	
Trash Removal Effectiveness	●	●	●	☠	●	●	●	●	●
Aesthetics	●	●	●	●	●	●	●	●	
Operational Complexity	●	●	●	●	●	●	●	●	
Timeliness (Grant)	●	●	●	●	●	●	●	●	
Ability to Execute	●	●	●	●	●	●	●	●	

Questions/Comments

Board Committee Action Items

- Executive Committee
- Governance Committee

Nominations

- Lafayette Crump; DCD Commissioner, City of Milwaukee
- Tom O'Reilly; Vice President, Sustainability, Rockwell Automation
- Natanael Martinez; Regional Economic Development Director, Wisconsin Economic Development Corporation

Next Term Officer Positions

- President, Marvin Bynum
- Vice President, Rosamaria Martinez
- Treasurer, Nahid Afsari
- Secretary, Kathryn Berger

Gratitude

- Dave Misky
- Council President Jose Perez
- Anne Summers
- Gary Ballesteros

Next Meeting

Adjourn